

21ST ANNUAL
PAT'S RUN

**LEGACY IN
EVERY STRIDE**

4/12/25

patsrun.org



AT ARIZONA STATE UNIVERSITY

#PatsRun25     

PAT TILLMAN  FOUNDATION

LEGACY IN EVERY STRIDE

**21st Annual Pat's Run,
April 12, 2025**

Dear Pat's Run Participants,

As we mark the 21st anniversary of Pat's Run, we're reminded of the profound impact this event has had on our lives and the lives of those around us. What began as a humble tribute to our friend Pat has evolved into a vibrant celebration of his enduring legacy.

Over the past two decades, we've witnessed tens of thousands of people come together from all around Arizona and across the country, united by a shared commitment to honor Pat's memory and continue his work. Your dedication, enthusiasm, and community spirit have been the driving forces behind Pat's Run's remarkable growth.

This year's theme, "**Legacy in Every Stride,**" pays tribute to the three pivotal aspects of Pat's life:

Sun Devil:

Pat's collegiate career at Arizona State University, where he excelled as a linebacker and graduated with honors.

Cardinal:

Pat's professional football career with the Arizona Cardinals, where he became a fan favorite and a respected teammate.

U.S. Army Ranger:

Pat's courageous decision to serve his country, ultimately making the ultimate sacrifice for his country.

As we run or walk those 4.2 miles together we're honoring our collective power to drive positive change and carry forward the values that Pat embodied.

This year, we honor 21 years of memories, friendships forged along the route, and the profound impact of the Tillman Scholars program, which you've helped support and grow by participating year after year. Your participation and support have transformed Pat's Run into an unforgettable experience that inspires and motivates people far beyond Arizona.

Thank you for being part of this journey.

**Pat's Friends and the Co-Founders of Pat's Run,
Perry Edinger, Alex Garwood, Doug Tammaro, Mark Zimmer, and Christina Hundley**





TEKSYSTEMS RUNS WITH PAT

FOR 10 YEARS RUNNING

We are honored to celebrate our 10th anniversary as the sponsor for Pat's Run.

At TEKsystems, our legacy goal is positive transformation—initiating changes that transform people, businesses and technology. Each year, we help more than 3,000 military service members, veterans and spouses secure IT careers in the U.S. and abroad. With thousands of current opportunities, we're ready to partner with you.

We're seeking dedicated individuals to join our team. We'd love to serve as your partner in career transformation.

What's your legacy going to be?

[TEKsystems.com/careers](https://www.teksystems.com/careers)



MISSION

Our mission is to **unite and empower remarkable military veterans and spouses** as the next generation of public and private sector leaders committed to service beyond self.



CORE VALUES

We select scholars based on these four core values — here are just a few of the ways they live up to them every day.



SERVICE

Dedicated to service beyond self, in and out of uniform.



SCHOLARSHIP

A lifelong learner, passionate about intellectual growth.



HUMBLE LEADERSHIP

Selflessly committed to leading by example.



IMPACT

Determined to unite others and advance ideas that change the world.

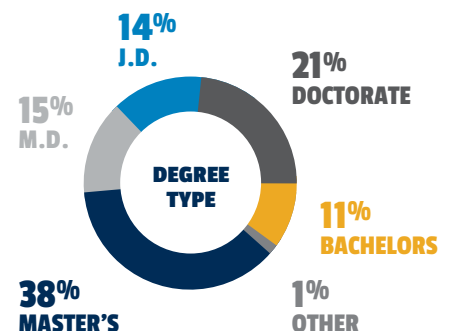
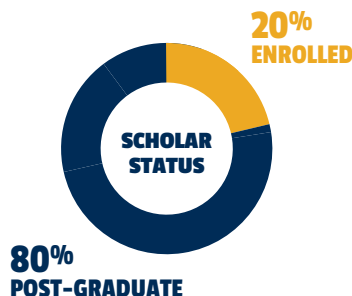
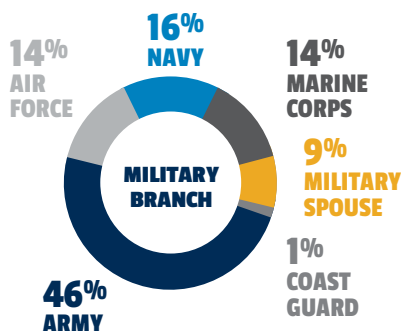
ABOUT OUR SCHOLARS TILLMAN SCHOLAR

Tillman Scholars are remarkable service members, veterans, and military spouses whose commitment to leadership through action and service beyond self goes beyond the uniform. Since our founding in 2004, we've selected nearly 1,000 Tillman Scholars as the next generation of leaders, empowering them through academic scholarships, lifelong leadership development, and a global community of high-performing peers and mentors.

NEARLY 1,000 
TILLMAN SCHOLARS IN OUR COMMUNITY

\$37 MILLION 
INVESTED IN LEADERSHIP AND ACADEMIC SUPPORT TO DATE

\$22K 
AVERAGE LIFETIME ACADEMIC AWARD



For more details on our scholars, please visit scholars.ptf.org.
View our [2024 Impact Report here](#).



RACE STARTER COACH KENNY DILLINGHAM

The Pat Tillman Foundation is excited to announce Coach Kenny Dillingham, head coach of the Arizona State University football team and 2024 Big 12 Football Coach of the Year, as the official race starter for the 21st Annual Pat's Run, presented by TEKsystems.

The 4.2-mile run/walk, which attracts nearly 30,000 participants annually and will take place in person in Tempe, Arizona and virtually on April 12, 2025.

In his two seasons as ASU head coach, Coach Dillingham has:

- Led the Sun Devils to their first College Football Playoff and their first conference championship since 2007.
- He has also established the Pat Tillman Leadership Council, a group of players selected by their teammates to honor and carry forward Pat's legacy of leadership.
- These accomplishments have revitalized the ASU football program and reinforced Coach Dillingham's commitment to shaping the next generation of leaders, both on and off the field.

“ ”

“I'm fired up to be a part of Pat's Run!” said Coach Dillingham. “Pat Tillman's selfless spirit and commitment to service are an inspiration to us all. My family, our team and our staff are honored to help kick off this amazing event that brings our community together to celebrate his legacy.”

Known for his high-energy personality and passion for developing student-athletes, Coach Dillingham will bring his signature enthusiasm to the starting line. Joined by his family, he'll help get the crowd ready (#ActivatetheValley) before taking off on the 4.2-mile course himself, alongside some of his coaching staff and players.

BEFORE RACE DAY

PACKET PICK-UP

The packet pick-up tent will be located at the bottom of the northeast staircase of the Mountain America Stadium. Parking will be available to the west of the tent. Have your bib number ready for packet pick-up. You can also pick up another participant's packet; please provide their bib number. To look up your bib number, click on your profile in RunSignUp.com.

In-person pick-up days and times:

- April 9, 9 A.M. – 6 P.M.
- April 10, 9 A.M. – 6 P.M.
- April 11, 9 A.M. – 6 P.M.

MERCH TENT

Visit the Pat Tillman Foundation merch tent during packet pick-up for an opportunity to purchase exclusive PTF gear, including past race shirts and other unique swag. All proceeds directly support the Tillman Scholars program, empowering our nation's next generation of leaders. Please note that supplies are limited, so be sure to stop by early to secure your favorite items.

BROOKS RUNNING

**NEW
this year!**

Brooks Running will be joining us as the official footwear sponsor of the 21st Annual Pat's Run. They will be at packet pick-up with local running store Sole Sports, showcasing some of their newest and favorite shoes to make sure you're ready for race day.



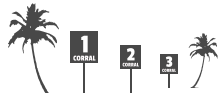
WHAT YOU NEED TO KNOW FOR RACE DAY ON APRIL 12, 2025!

6:00 A.M.



EXPO OPENS

6:30 A.M.



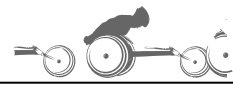
CORRALS OPEN

6:55 A.M.



COACH KENNY DILLINGHAM & FAMILY WELCOME

7:00 A.M.



4.2 MILE CHAIR RACE START

7:05 A.M.



4.2 MILE RACE START

7:45 A.M.



TILLMAN TAILGATE OPENS WITH LIVE MUSIC, FOOD TRUCKS, AND VENDORS

10:00 A.M.



0.42 MILE KIDS RUN START JOINED BY ASU FOOTBALL TEAM

1:00 P.M.



TILLMAN TAILGATE CLOSES



RACE SHIRT, BIB & MEDAL

Your race bib must be pinned, visible, and worn on the front and outside of all clothing during the entire race. Your race bib is non-transferable and may only be worn by you. The timing tag on your race bib (activated as you cross the start line mats) will ensure that your official race time is not affected by your corral assignment.

After crossing the finish line, you must present your bib to receive the 2025 Pat's Run Medal, the third and final in our three-year series.

NEW this year!

Show your Pat's Run race bib at the Tillman Tailgate presented by Four Peaks Brewing and kick off the post-race party with a complimentary beer! Toast your 4.2-mile achievement with a Desert Daydream Hazy IPA, Wow Wheat, or Kilt Lifter.



REMEMBER TO BRING

- Pat's Run Bib with Corral #
 - For safety reasons you need to be wearing your race bib in order to enter your corral
- Your Driver's License or state/government issued ID (for TILLMAN TAILGATE beverages)
- Appropriate shoes
- Note: No gear check available; please plan accordingly

SAFETY PRECAUTIONS & PROHIBITED ITEMS

All attendees will be screened using metal detectors before entering the race area. Bags, weapons of any kind, dogs and other pets, drones, bicycles, in-line skates, skateboards, scooters, and all motor-driven vehicles are prohibited. Participants who do not adhere to the Pat's Run safety guidelines will be denied access. Please bring only essential items to the race. There is no onsite storage provided for race participants.

START LINE CORRALS

The start line is located at **the intersection of Packard Dr and Rio Salado Parkway**. Pat's Run participants will be invited to enter their assigned corrals starting at 6:30 a.m. We've listened to your feedback and updated our corral system to ensure a smoother, safer, and more enjoyable start for all participants - whether you're a runner or walker.

- Runners in Corrals 1-10 should plan to arrive between 6:30 and 6:45 a.m.
- Corrals 11-28 can arrive between 6:45 and 7:15 a.m. to make their expected start time. Each runner is assigned to a corral based on state-of-the-art algorithms drawing from multiple data points including previous run times from various running events and expected finish time.
- To find your corral, check your bib number. Corral numbers correspond to the thousands placed in your bib number (e.g., 0-999 are in corral 1, every bib number 1000 and up, add 1 to the first digit in your corral number).



You are only permitted to enter your assigned corral or any corral behind your assigned corral. To alleviate congestion on the course, runners must stay on the left and walkers must stay on the right of the course.



Wave	Start Time	In Corral By
1	7:05 AM	7:00 AM
2	7:08 AM	7:00 AM
3	7:11 AM	7:00 AM
4	7:14 AM	7:00 AM
5	7:17 AM	7:00 AM
6	7:20 AM	7:00 AM
7	7:23 AM	7:00 AM
8	7:26 AM	7:15 AM
9	7:29 AM	7:15 AM
10	7:32 AM	7:15 AM
11	7:35 AM	7:20 AM
12	7:38 AM	7:20 AM
13	7:41 AM	7:20 AM
14	7:44 AM	7:25 AM
15	7:47 AM	7:25 AM
16	7:50 AM	7:25 AM
17	7:53 AM	7:30 AM
18	7:56 AM	7:30 AM
19	7:59 AM	7:30 AM
20	8:02 AM	7:45 AM
21	8:05 AM	7:45 AM
22	8:08 AM	7:45 AM
23	8:11 AM	7:50 AM
24	8:14 AM	7:50 AM
25	8:17 AM	7:50 AM
26	8:20 AM	8:00 AM
27	8:23 AM	8:00 AM
28	8:26 AM	8:00 AM

SPECTATORS

Stadium seating is accessible via the north end zone staircase. Please note that all spectators must use these stairs for entry. Entry south of the stadium is restricted. Runners/walkers will exit through the northeast tunnel. If you are a spectator that will require ADA accessibility to enter the stadium, please email patsrun@pattillmanfoundation.org.

KIDS RUN

The Kids Run starts at 10 A.M.

Let's ensure a safe and enjoyable day for our youngest supporters and their families. Pat's Run Kids Run is a 0.42 mile, noncompetitive run/walk for children 12 years and under.

Kids Run participants will receive a Kids Run shirt and medallion. Unless you paid for advance shipping, please plan to pick up Kids Run materials during Packet Pickup outside the north end of Mountain America Stadium.

KIDS PICKUP ZONE

All children 12 years old and under who are registered for the 4.2 or 0.42 mile race will be issued a matching pair of Kids Pickup Wristbands, one for their parent or guardian, and one for the child. After crossing the finish line, kids 12 and under can safely wait for a parent in the Kids Pickup Zone located east of the finish line.

Children will be released to a parent/guardian wearing the wristband that exactly matches the number on the child's wristband. Kids Run participants will not receive a 4.2 mile finisher medal but will receive a Kids Run medallion at the finish line.



KIDS RUN MAP



GETTING AROUND ON RACE DAY



TRANSPORTATION

Limited free parking is available in the parking garages and lots surrounding ASU. Due to race day traffic congestion, participants are strongly encouraged to carpool, walk, bike or ride the Valley METRO Light Rail to arrive at the event site.

- To avoid delays, approaching the race venue from south of Rio Salado Parkway is advised.
- Bikes can be parked on the North West corner of Rio Salado and Rural Road.
- The Valley METRO Light Rail has a stop conveniently located at Veterans Way and College Avenue (1/2 mile from the start line) and various Park & Ride locations, including McClintock Dr/Apache Blvd and 101 Fwy/ Apache Blvd. Trains run every 15 minutes starting at 4:00 a.m.

+ MEDICAL STATIONS

The Medical Team is a dedicated group of medical professionals from Banner Health available to assess your race day needs and administer acute first aid if necessary. Medical stations will be located at the start, finish, and every water station along the course. For race day help, look for the volunteers dressed in red shirts with a white cross or those in a black polo that say Pat's Run Race Committee.

🚲 RUNNING STROLLERS

Participants with strollers who wish to run (and finish in less than 40 minutes) will be allowed to start in a corral marked "Running Strollers" directly behind the last runner's corral, number 7, regardless of assigned corral. Only individual runners with strollers may enter this corral; no family members or running buddies. All walkers or slow joggers with strollers, regardless of estimated finish time, will be required to start in the final corral, number 28.

i INFORMATION BOOTH

The Race Information booth will be located at the south end of the Race Day Expo. The Information Booth will also serve as the event Lost & Found. Valuables found in the race venue can be delivered to and retrieved from the Information Booth. Any valuable items NOT claimed by 11 a.m. will be returned to the Pat Tillman Foundation office. To claim an item after the event, please email patsrun@pattillmanfoundation.org.

PARKING MAP



RACE ROUTE



POST-RACE TILLMAN TAILGATE

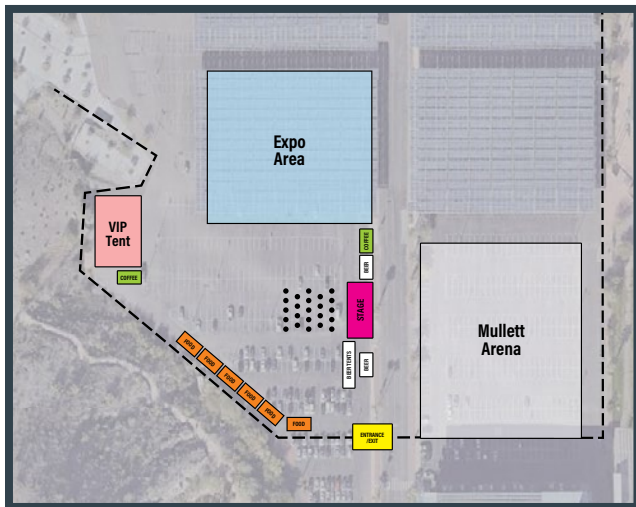
Visit the Pat's Run Expo before and after the race where more than 50 local and national vendors will provide food and drink samples, giveaways, and more.

NEW
this year!

Introducing Tillman Tailgate! Join us for the ultimate post-race celebration, featuring:

- Enjoy live music, food trucks, and photo opportunities
- Alternating live band, [The Instant Classics](#), and DJ performances
- Food and beverage trucks: [Four Peaks Traveling Kitchen & Catering](#), [Guinness](#), [Queso Good](#), [Corn Dog Co.](#), [Portillo's Beef Bus](#), [AZ Smoothie Shack](#), [Pop N Bottles](#), [Chick-fil-A](#), [What's Brewing AZ](#).

Important to Note: All beer tickets and food truck vendors are cashless. Venmo/Paypal terminals will be available on-site.



- Tillman Tailgate Stage
- Coffee
- High Top Tables
- Food Trucks
- VIP Tent
- Fence Line
- Beer Truck / Tents
- Entrance/Exit



OFFICIAL RESULTS & PHOTOGRAPHY

The official race results will be posted online at patsrun.org on April 13, 2025. Free race photography will be posted online within your race results in the days following race day.



A great career for Hunter, a stronger economy for the nation

Hunter Mantle

'24 BS in engineering

Now an Avionics
Engineer at MOOG
Aerospace Defense

ASU ranks as the No. 2 public university in the U.S. for employability of its graduates, ahead of UCLA, University of Michigan and Purdue. For Hunter, that means he was able to land his dream job as an avionics engineer at MOOG. For the rest of us, it means filling critical gaps in our nation's workforce in public service, engineering, science and more. ASU graduates fuel our future and make our national economy stronger.



asu.edu

**#2 in the U.S. for
employability** among
public
universities

ASU ahead of UCLA, University of Michigan and Purdue

— Global Employability University Ranking and Survey, 2025

21ST ANNUAL
PAT'S RUN
 PRESENTED BY **TEKsystems**
 Own change

CORRAL LEADERS

Meet the Tillman Scholar leading your corral! These runners and walkers represent our community of nearly 1,000 military service members, veterans, and spouses who lead through action and serve beyond self.

TILLMAN SCHOLARS 2024



TILLMAN SCHOLARS 2023



TILLMAN SCHOLARS 2022



2011 **TILLMAN SCHOLAR**
 ARMY
 UNIVERSITY OF PENNSYLVANIA
 BUSINESS
TOM ALLISON



2019 **TILLMAN SCHOLAR**
 ARMY
 RHODE ISLAND SCHOOL OF DESIGN
 HUMANITIES
CHRISTOPHER VILLALTA



2012 **TILLMAN SCHOLAR**
 ARMY
 UNIVERSITY OF MINNESOTA
 EDUCATION
AMBER MANKE



2012 **TILLMAN SCHOLAR**
 ARMY
 UNIVERSITY OF OREGON
 LAW
KENT DAVIS



2014 **TILLMAN SCHOLAR**
 ARMY
 UNIVERSITY OF ARIZONA
 STEM
KYLE BROWN



2013 **TILLMAN SCHOLAR**
 ARMY
 BALL STATE UNIVERSITY
 HEALTHCARE
APRIL KROWEL



2023 **TILLMAN SCHOLAR**
 AIR FORCE
 UNIVERSITY OF ARIZONA
 MEDICINE
ALEX HILSER



2023  **TILLMAN**
SCHOLAR

ARMY
UNIVERSITY OF VIRGINIA
STEM

**GIOVANNA
CAMACHO**



2020  **TILLMAN**
SCHOLAR

ARMY
ARIZONA STATE UNIVERSITY
PUBLIC SERVICE

**HYEJUNG
PARK**



2023  **TILLMAN**
SCHOLAR

MILITARY SPOUSE
UCLA
LAW

**EVAN
ZEPEDA**



2016  **TILLMAN**
SCHOLAR

AIR FORCE
UNIVERSITY OF OKLAHOMA
MEDICINE

**JAY
VINNEDGE**



2023  **TILLMAN**
SCHOLAR

AIR FORCE
GEORGE WASHINGTON
UNIVERSITY | HEALTHCARE

**ORAIN
EDWARDS**



2016  **TILLMAN**
SCHOLAR

ARMY
BAKER UNIVERSITY
EDUCATION

**SETH
KASTLE**



2017  **TILLMAN**
SCHOLAR

AIR FORCE
UNIVERSITY OF NEBRASKA
STEM

**ZACHARY
MEADE**



2011  **TILLMAN**
SCHOLAR

MARINE CORPS
COLUMBIA UNIVERSITY
BUSINESS

**NEAL
RICKNER**



2021  **TILLMAN**
SCHOLAR

MILITARY SPOUSE
UNIVERSITY OF TEXAS-TYLER
BUSINESS

**MARYN
TAYLOR**



2015  **TILLMAN**
SCHOLAR

MILITARY SPOUSE
JOHNS HOPKINS UNIVERSITY
STEM

**SHANNON
ALT**



2020  **TILLMAN**
SCHOLAR

ARMY
ST. MARY'S UNIVERSITY
LAW

**ROBERT
MIHARA**



2015  **TILLMAN**
SCHOLAR

NAVY
TUFTS UNIVERSITY
PUBLIC SERVICE

**ANTHONY
LENA**



2010  **TILLMAN**
SCHOLAR

ARMY
UNIVERSITY OF ARIZONA
MEDICINE

**BARRETT
HOWELL**



2020  **TILLMAN**
SCHOLAR

ARMY
OHIO UNIVERSITY
HEALTHCARE

**WILLIAM
PARKER**



2024  **TILLMAN**
SCHOLAR

ARMY
ARIZONA STATE UNIVERSITY
BUSINESS

**JACK
SCHANNAP**



2018  **TILLMAN**
SCHOLAR

NAVY
STANFORD UNIVERSITY
BUSINESS

**TREVOR
PROPHET**



2012  **TILLMAN**
SCHOLAR

ARMY
ARIZONA STATE UNIVERSITY
LAW

**SANDY
WALLACE**



2022  **TILLMAN**
SCHOLAR

MILITARY SPOUSE
UNIVERSITY OF NORTH
CAROLINA | HEALTHCARE

**LIOR
VERED**



2014  **TILLMAN**
SCHOLAR

AIR FORCE
ARIZONA STATE UNIVERSITY
HEALTHCARE

**DIANA
ROGERS**



2015  **TILLMAN**
SCHOLAR

MILITARY SPOUSE
QUEENS UNIVERSITY
HEALTHCARE

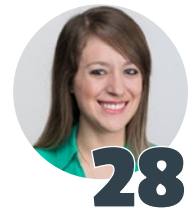
**DEBBIE
STEPHENSON**



2016  **TILLMAN**
SCHOLAR

MILITARY SPOUSE
ARIZONA STATE UNIVERSITY
MEDICINE

**KATIE
NEWTON**



THANK YOU TO OUR SPONSORS

We're grateful to our sponsors whose generous support and dedication make Pat's Run a success.



Interested in sponsoring the 2026 Annual Pat's Run?
For sponsorship opportunities, please contact Scott Coleman at scolem@ptf.org

ARIZONA'S #1 CASINO

Newsweek



RANKING
The Best of Arizona Business
ARIZONA®



**YOU
DO
YOU**

GILA RIVER®
RESORTS & CASINOS



Wild Horse Pass
Lone Butte
Vee Quiva
Santan Mountain

 | @PlayAtGila | PlayAtGila.com | 800-WIN-GILA | Owned and operated by the Gila River Indian Community

Please Play Responsibly. If you have a gambling problem, please call 1-800-639-8783.



Join the family!
Download our free
AZ Family news app



Good Morning Arizona
Weekday mornings 4:30am - 10am

Let's team up to celebrate
Arizona's hero, Pat Tillman and
the Tillman Scholar community,
at the **21st** Annual Pat's Run.



HONORING OUR TROOPS & VETERANS

Join now, get up to \$25 Free Play.



CASINO ARIZONA  TALKING STICK RESORT

More than 2,800 slots • Live table games & richest rewards • Largest poker room in AZ

101 & McKELLIPS • CASINOARIZONA.COM

101 & TALKING STICK WAY • TALKINGSTICKRESORT.COM

5.11 

THIS IS WHERE THE STRONG BECOME UNBREAKABLE

Proud sponsor of



Register to purchase
approved foundation gear



WWW.511TACTICAL.COM

© 2025 5.11, Inc.



Sharing success with you.

Members. Community. Team.

At Desert Financial, we believe in sharing success with our members, community and team – simply because it's the right thing to do.



In 2024, we worked with nonprofits to give back to Arizona communities

- Over \$5.2 million in corporate, foundation and employee giving
- 16,000+ volunteer hours
- 11,000+ impacted through financial well-being workshops and webinars

We are proud to support **Pat Tillman Foundation and Pat's Run** as part of our mission of sharing success across Arizona!





An Independent Licensee of the Blue Cross Blue Shield Association

We love helping Arizona.

We're based in Arizona, and we love it here.

Our mission is to inspire health and make it easy, and with that, we are proud to align our success with the successes of the communities we serve.

AZBlue.com/LoveAZ





**BE FEARLESS.
WE'RE HERE FOR YOU,
EVERY STEP OF THE WAY.**

American Family Insurance is proud
to support the 21st Annual Pat's Run



American Family Mutual Insurance Company, S.I. & its Operating Companies,
6000 American Parkway, Madison, WI 53783

CHOOSE BETTER

REWRITE YOUR ROUTINE

790mg ELECTROLYTES* | COCONUT WATER | NO ARTIFICIAL DYES OR SWEETENERS





ON A MISSION FOR VETERANS AND THEIR FAMILIES

ADP is proud to support the Pat Tillman Foundation Tillman Scholars program

jobs.adp.com



Always Designing
for People®

BUILT TO SET THE PACE

CROSS THE FINISH LINE IN STYLE WITH A LEXUS HYBRID, DESIGNED TO GO THE DISTANCE.



NX PLUG-IN HYBRID*

ES HYBRID

RX HYBRID



Peoria
**ARROWHEAD
LEXUS**
9238 W. Bell Road
(623) 872-4000

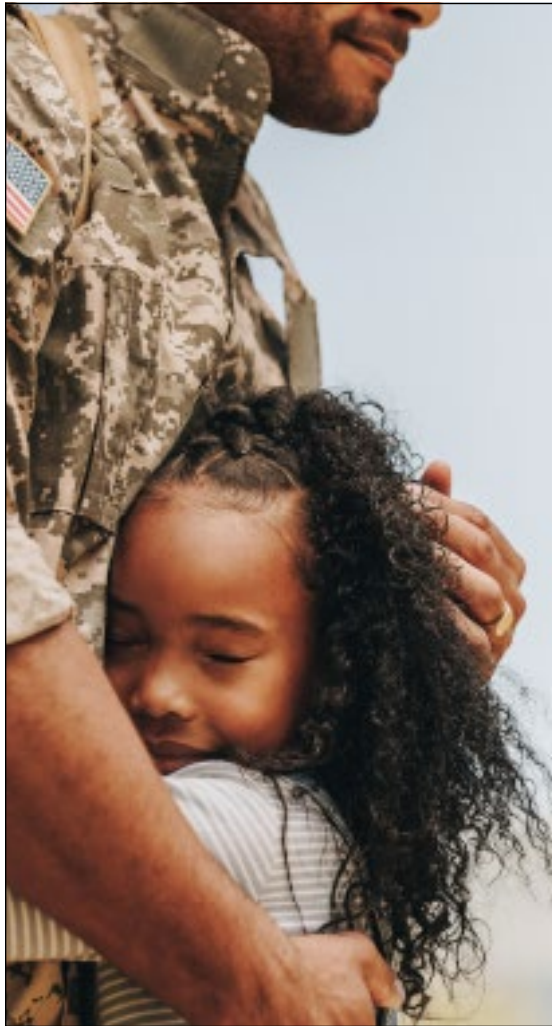
Scottsdale
**BELL LEXUS
NORTH SCOTTSDALE**
18555 N. Scottsdale Road
(480) 502-5000

Chandler
**LEXUS OF
CHANDLER**
7430 W. Orchid Lane
(480) 421-4000

Phoenix
**EARNHARDT
LEXUS**
800 E. Camelback Road
(480) 990-7000

Mesa
**SUPERSTITION
SPRINGS LEXUS**
6206 E. Test Drive
(480) 324-8900

*Limited availability. ©2025 Lexus, a Division of Toyota Motor Sales, U.S.A., Inc.



KTAR NEWS
92.3 FM

HONORING PAT'S LEGACY

Download the KTAR News App →





Honored to Celebrate Our Nation's Finest

Today "Pat's Run" again remembers the selfless service and sacrifice of U.S. Army Ranger Pat Tillman. This remarkable annual event is dedicated to his legacy and to inspire exceptional Service Members, Veterans and spouses to become our next generation of selfless leaders.

TriWest Healthcare Alliance is honored to be a long-time sponsor of the Pat Tillman Foundation and "Pat's Run." Our organization is founded on a single mission to serve those who have served.

To explore our passion for service, visit www.triwest.com/joinourteam and learn why we're On a Mission to Serve®.

It's a mission we take seriously. It's what we're driven to do.



Proud Sponsor of Pat's Run

plexus®

PROUD SPONSOR OF THE
21st Annual Pat's Run

FOR EVERY SACRIFICE...
TO EVERY SERVICE MEMBER AND VETERAN...
THANK YOU.

At Plexus®, we're dedicated to helping others find true Hope, Health, and Happiness – offering products that support whole-body wellness from the inside out and business opportunities that empower people to design the life they deserve.

As we strive to take our mission further, we recognize that we can't do it alone. That's why we're proud to support entrepreneurs, local communities, and organizations who are committed to enriching their corners of the world.

With our home base in Scottsdale, Arizona, we're honored to partner with the Pat Tillman Foundation and to show our continued support for the incredibly dedicated service members who stand up to protect our freedom.

Learn more about Plexus at plexusworldwide.com



A community of strength

Together, we're building a better, stronger community. State Farm® is proud to join our neighbors to support the Pat Tillman Foundation.



State Farm, Bloomington, IL

U-Haul® Remembers Pat Tillman and Honors His Legacy by Supporting

PAT'S RUN



WWII Navy veteran L. S. "Sam" Shoen and his wife, Anna Mary, started U-Haul® in 1945 with the vision and initiative to address the basic need of affordable, accessible mobility. In doing so, they ignited an industry. Many of our first Team Members, local dealers and customers were veterans returning home from the war, seeking to move their families to a better life.

Today, our ties to the military community remain prominent through our support of numerous veteran organizations and initiatives. Our nation's heroes seeking a promising civilian career are invited to join Team U-Haul. We recruit veterans and offer them, and their spouses, preference in the hiring process. Find your future at uhauljobs.com

Thank you veterans and Pat's Run participants!



uhaul.com/jobs



Set a **Financial PR** With Navy Federal

It's our mission to help you reach your financial goals faster. Membership is open to all branches of the military, Veterans and their families.

NAVY 
FEDERAL
Credit Union®

ARMY
MARINE CORPS
NAVY
AIR FORCE
SPACE FORCE
COAST GUARD
VETERANS

Serving you at 6 branches
in the Phoenix area

Our Members Are the Mission

Join today at navyfederal.org

Insured by NCUA. © 2025 Navy Federal NFCU 14466 (2-25)



SPROUTS[®]

FARMERS MARKET



Sprouts and our veteran employees are proud to support the Pat Tillman Foundation in its mission to create lasting, positive change and empower the next generation of leaders.

SPROUTS IS A PROUD PARTNER WITH THE

PAT TILLMAN FOUNDATION



Learn more about the work Sprouts is doing in your community at [Sprouts.com/Foundation](https://www.sprouts.com/foundation)



SPROUTS[™]
HEALTHY COMMUNITIES
FOUNDATION

DISCOVER[®]

PROUD PARTNER OF PAT'S RUN



ATHLETIC BREWING CO[®]

FIT FOR ALL TIMES[™]



ATHLETICBREWING.COM | [@ATHLETICBREWING](https://www.instagram.com/ATHLETICBREWING)

Athletic Brewing Company, Milford, CT and San Diego, CA. Near beer <0.5% alc/vol. Average Analysis of Athletic Lite per 12 fl. oz. - Calories 25, Carbohydrates 5g, Protein 0g, Fat 0g. Average Analysis of Upside Dawn per 12 fl. oz. - Calories 45, Carbohydrates 10g, Protein <1g, Fat 0g. Average Analysis of Run Wild per 12 fl. oz. - Calories 65, Carbohydrates 14g, Protein <1g, Fat 0g. Average Analysis of Free Wave per 12 fl. oz. - Calories 70, Carbohydrates 16g, Protein 1g, Fat 0g. Average Analysis of Cerveza Atletica per 12 fl. oz. - Calories 60, Carbohydrates 14g, Protein 1g, Fat 0g.

BUILT TO SERVE. BUILT TO LEAD.

YOUR NEXT MISSION STARTS HERE

At ASRC Industrial (AIS), we recognize the discipline, leadership, and resilience that veterans bring to the workforce. We are committed to building a strong, diverse team by actively hiring military service members, veterans, and their families alongside skilled professionals from all backgrounds.



35
COMPANIES & GROWING



50
STATES & CANADA



4.2K
EMPLOYEES NATIONWIDE



14.0K
ALASKA NATIVE OWNERS

YOUR SKILLS AND LEADERSHIP ARE IN DEMAND!

CHOOSE AIS

- Competitive wages
- Comprehensive benefits package
- Paid time off
- 401K matching program
- Professional growth and development
- Inclusive work environment

EXPLORE CAREER PATHS

- Project Management and Engineering
- Estimating
- Superintendent
- Safety Manager
- Quality Control
- Environmental Compliance Specialist
- Ground Water Scientist and Engineers

APPLY NOW!

If you're eager to join a company that values its team members, submit your application today.





THE JUDGEMENT FREE ZONE® IS ALWAYS JUST AROUND THE CORNER!

40+ PHOENIX AREA LOCATIONS

SCAN THE QR CODE TO
VIEW OUR REGIONAL MAP ▶



Wittmann

Surprise

Glendale

Scottsdale

Fountain Hills

Buckeye

Avondale

Phoenix

Mesa

Apache Junction

Queen Creek

San Tan Valley

Maricopa

Florence

Casa Grande

MEMBERSHIPS START AT JUST \$15 A MONTH FOR SINGLE CLUB ACCESS

OR

Enjoy Access to every location with the

pf BLACK CARD®

ALL THE PERKS.

for only

\$24⁹⁹ A MONTH!

WITH THE PF BLACK CARD,
YOU'LL ALSO GET:

- Bring a Guest Anytime
- Use of Any Planet Fitness Worldwide
- Use of Tanning
- Use of Massage Chairs
- Use of HydroMassage
- Use of Total Body Enhancement
- 50% Off Select Drinks
- Premium Perks: Partner Rewards & Discounts

CHECK OUT PLANETFITNESS.COM TO FIND A LOCATION CLOSE TO YOU!

BIG BRAND
TIRE & SERVICE

21ST ANNUAL
PAT'S RUN
PROUD PARTNER



FREE*
OIL CHANGE

Call to Redeem Today!
(866) 795-2012

use code: **FROCAZ**

*Coupon valid on any oil change. Limit of one coupon per customer. Valid only at participating locations. Maximum discount of \$100. Offer Expires 12/31/2025



**MADE IN
PHOENIX**

learn more today!
METAMUCIL.COM

Smart & Final[®]

CHARITABLE
FOUNDATION

IS PROUD TO BE A
SPONSOR OF THE
**21ST ANNUAL
PAT'S RUN**

FEEL
LIMITLESS
IN THE
GLYCERIN 22



BROOKS
Let's run there

**SHOP AT YOUR LOCAL
SOLE SPORTS/RUNNER'S DEN**

PAT TILLMAN
FOUNDATION

SCHOLARSHIP
HUMBLE
LEADERSHIP
SERVICE
IMPACT



For more than 20 years, the legacy of Pat Tillman has been carried forward by the nearly 1,000 Tillman Scholars, who include military veterans, active duty, and military spouses. These scholars are dedicated to making a difference, and each one embodies Pat's principles of service, scholarship, humble leadership, and impact.

Support Pat's legacy by visting
donate.PTF.org