



PAT TILLMAN
FOUNDATION

2023 IMPACT

Looking back to 2023, and the incredible impact of the Pat Tillman Foundation, I am filled with pride and gratitude. The organization was founded twenty years ago to continue Pat's legacy of service, impact, and humble leadership. Today, nearly 1,000 Tillman Scholars are living proof of that mission, and their impact is truly inspiring. It's this impact that motivates us to continue our work and we hope it inspires you to continue your support.

As a 2014 Tillman Scholar, I have personally experienced the transformative power of this community. It is not just an honor, but a privilege for me to serve as CEO and witness the extraordinary impact of our scholars every day.

This annual report is a testament to the dedication of the Tillman Scholars and the unwavering support of our donors, partners, and staff. Your contributions have been invaluable, and together, we as a community are ensuring that Pat's legacy lives on, inspiring future generations.

With gratitude,

A handwritten signature in white ink that reads "Katherine Steele". The signature is fluid and cursive, with the first name being larger and more prominent than the last name.

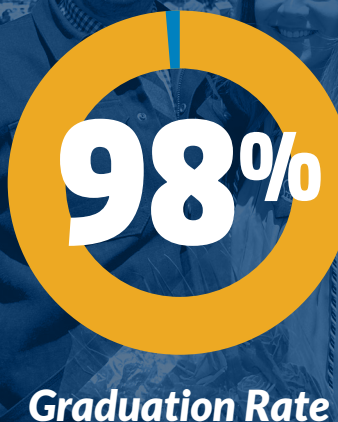
Dr. Katherine Steele
CEO, 2014 Tillman Scholar



EXPANDING THE REACH: WELCOMING A NEW CLASS

Investing in Leadership for a Better Future

Two decades ago, the Pat Tillman Foundation set out to honor the legacy of Pat Tillman by investing in remarkable leaders dedicated to service beyond self. We honor a thriving community of nearly 900 Tillman Scholars who are making a real impact globally.



In 2023, we welcomed 60 new scholars, each with unique backgrounds, diverse experiences, and a shared passion for tackling critical issues in education, technology, healthcare, and beyond.



BEYOND THE SCHOLARSHIP: EMPOWERING A LIFETIME OF IMPACT

The Pat Tillman Foundation's commitment to Tillman Scholars extends far beyond their academic pursuits. We recognize that leadership is a lifelong journey, and we're dedicated to providing ongoing support to our community through leadership development opportunities, mentorship programs, and a robust network of fellow service members and military spouses.

As we look to the future, we're excited to expand our impact through innovative initiatives and partnerships:

Strengthening University Partnerships:

We're deepening our relationships with universities to impact the Tillman Scholar community better. This includes expanding professional development opportunities, service projects, research collaborations, and teaching opportunities for our scholars.

Organizational Leadership Minor at Chicago State University:

We're collaborating with Chicago State University to develop a groundbreaking Organizational Leadership minor for both ROTC and non-military students. This program will leverage our Tillman Leadership Institute's Impact Leaders curriculum, extending the reach of Tillman Scholar values and expertise to a wider audience.

These initiatives represent just a glimpse of our vision for the future. We remain steadfast in our commitment to empowering Tillman Scholars to become the leaders our world needs, both now and for future generations.

MENTORSHIP

K2 Integrity Pilot Program

As part of our commitment to fostering professional growth, we launched a new mentorship pilot program exclusively for Tillman Scholars. This 12-month program will offer executive-level mentorship and invaluable guidance from industry leaders, featuring virtual engagement and two fully-funded in-person visits.

For our first cohort, we partnered with K2 Integrity, a global risk, compliance, investigations, and monitoring firm. Through this partnership, scholars gained unique insights and experiences from top professionals in the field.

“Working with Dr. Michele Malvesti (Senior Managing Director, K2 Integrity) has enabled a calm and reasoned approach to an otherwise chaotic transition period ... Instead of jumping right in and discussing whether I should go to the private sector, academia, or government, Michele helped me focus on what I wanted as a person and started me on a path of self-exploration,”

- Maggie Smith, 2011 Tillman Scholar.

We plan to continue this program and expand our partnerships with leading organizations and companies such as the NFL, Liberty Mutual, and Martis Capital, further enriching the mentorship experience for future cohorts.

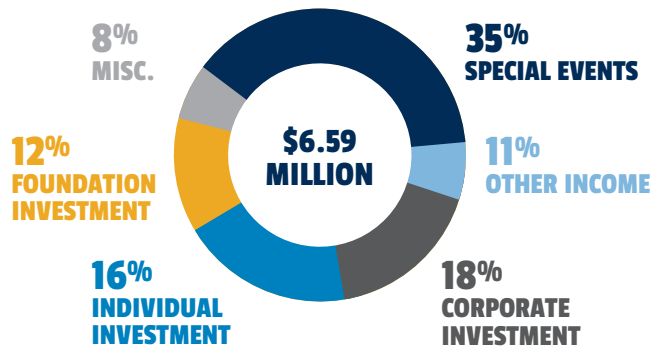


FINANCIALS

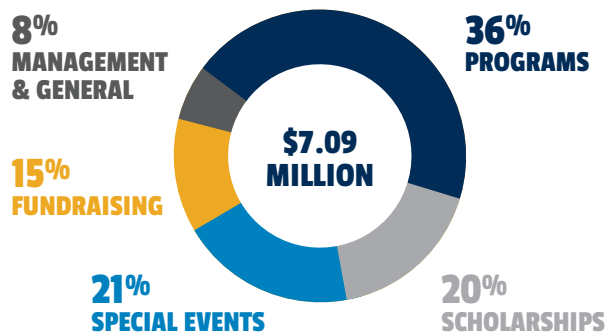
Transparency to our investors and our community is a top priority. This page reflects our audited financials for the year ending December 31, 2023.

The Pat Tillman Foundation’s audited financial statements, state disclosures and 990s can be found online at impact.ptf.org.

2023 REVENUE



2023 EXPENSES



REVENUE

Special Events	\$2,275,526
Corporate Investment	\$1,201,165
Individual Investment	\$1,072,018
Foundation Investment	\$761,365
Other Income	\$725,809
Miscellaneous	\$553,429
TOTAL REVENUE	\$6,589,312

EXPENSES

Special Events	\$1,516,109
Fundraising	\$1,023,416
Programs	\$2,543,704
Management and General	\$592,744
Scholarships	\$1,409,500
TOTAL EXPENSES	\$7,085,472

FINANCIAL RATIOS

	2020	2021	2022	2023
Programs	70%	70%	74%	71%
Fundraising	19%	20%	17%	18%
Management and General	11%	10%	9%	11%

TOTAL END OF YEAR NET ASSETS FOR FY 2023: \$4,890,512

Platinum
Transparency
2022

Candid.

For its commitment to accountability, transparency and healthy financial practices, the Pat Tillman Foundation has received a Platinum Seal of Transparency from Candid and Guidestar.

JOIN US IN CARRYING FORWARD PAT'S LEGACY

The Pat Tillman Foundation empowers future leaders who embody Pat's values of service, scholarship, and humble leadership. Your support directly fuels our Tillman Scholar program and Tillman Leadership Institute, providing critical educational, mentorship, and professional development resources.

YOUR INVESTMENT MAKES A LASTING IMPACT:

Educate Fund scholarships that enable military veterans, active duty and military spouses to pursue higher education and make a difference in their fields.

Empower Support leadership training that equips Tillman Scholars with the skills to drive positive change in their communities and beyond.

Inspire Help build a network of leaders committed to service, integrity, and a better future.

You can play an important role in continuing Pat Tillman's legacy of service and leadership for generations by visiting donate.ptf.org.

READY TO GET INVOLVED?

Learn more Visit our website, donate.ptf.org, to discover the incredible stories of our Tillman Scholars and their work.

Apply If you're a veteran or military spouse, explore our Tillman Scholar program. Applications for the 2025-2026 Class will be open from December 1, 2024 until February 1, 2025.

Donate Your contribution, regardless of size, significantly affects our ability to empower future leaders.

2023 PAT TILLMAN FOUNDATION BOARD OF DIRECTORS

Marie Tillman Shenton

Chair & Co-founder

Chris Hart

Vice Chair

Amber Manke

Director

Ian Sacks

Lead Director

Christine Wilkinson

Director

Meg Cortezi

Director

John Svoboda

Director

Alex Garwood

Director

Michael Bidwill

Director

Benjamin Hill

Director

Joe Browne

Director

Joe Shenton

Director

Lazar Raynal

Director

