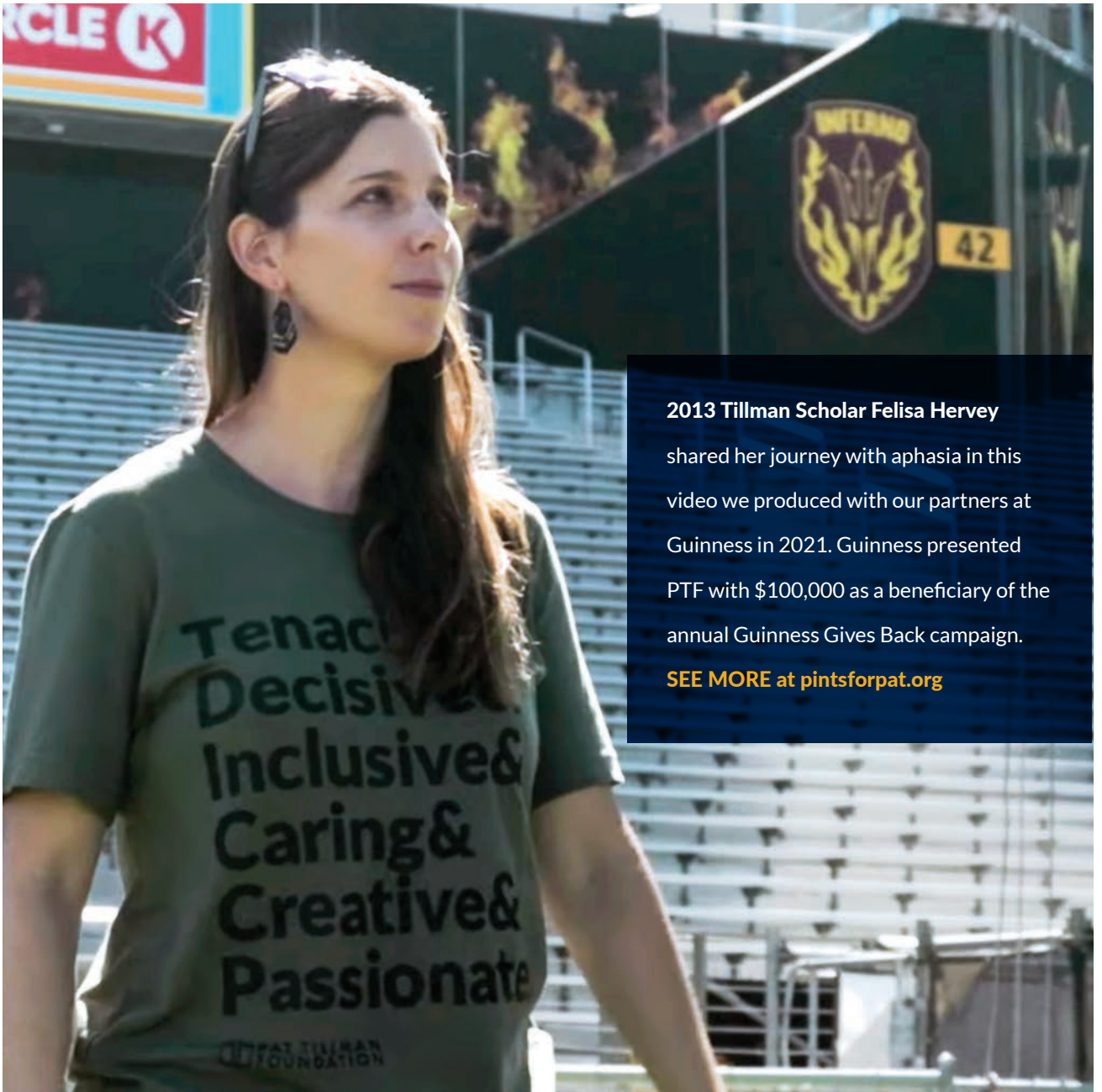




PAT TILLMAN  
FOUNDATION

# IMPACT REPORT: LEADERSHIP THROUGH ACTION





**2013 Tillman Scholar Felisa Hervey**

shared her journey with aphasia in this video we produced with our partners at Guinness in 2021. Guinness presented PTF with \$100,000 as a beneficiary of the annual Guinness Gives Back campaign.

**SEE MORE** at [pintsforpat.org](https://pintsforpat.org)

# TABLE OF CONTENTS

Mission and Values	2
Meet Our Scholars	3
Our University Partners	4
About Our Scholars	6
Pat's Run	8
Pat's Run Challenge Series	9
Investors and Supporters	10
Tillman Honors	12
Our Leadership	14
Financials	15
Pat Tillman	16

## ON THE COVER:

Tillman Scholars in Austin, Texas, joined Verizon in creating a mural to celebrate National Kindness Week.

## *To our community.*

As society continues to navigate the complexities of a global pandemic, armed conflict in Ukraine, and the fallout from the United States' exit from Afghanistan, it's easy to get discouraged. Yet we believe in a bright future, led by the more than 800 Tillman Scholars, remarkable military service members, veterans, and spouses who continue to inspire us and carry on Pat Tillman's legacy of service beyond self and leadership through action.

Our foundation's commitment is to work alongside our Tillman Scholars to fulfill Pat's legacy of inspiring people to become better leaders, developing ideas and solutions that result in positive change. We don't exist to reward service members and military spouses with scholarship money; we exist to grow a generation of leaders who embrace intellectual curiosity, act selflessly, and lead through action to transform their communities and the world.

Because of the commitment from our supporters and investors, University Partners, Board of Directors and staff, our scholars can continue to serve humbly and make an impact – and the world will be a better place for it.



**Marie Tillman**

Chair and Co-founder,  
Pat Tillman Foundation



**Dan Futrell**

CEO and 2011 Tillman Scholar

## **MISSION**

Our mission is to **unite and empower remarkable military veterans and spouses** as the next generation of public and private sector leaders committed to service beyond self.

## **CORE VALUES**

We select scholars based on these four core values — here are just a few of the ways they live up to them every day.



### **SERVICE**

Emily Balog, Chris Diaz, Daris McInnis, and Matt Miclette connect veterans in Philadelphia with volunteer opportunities through their organization, Action Tank.



### **SCHOLARSHIP**

Russell Ledet became a triple board medical resident in Indiana, with studies in pediatrics, psychiatry, and child and adolescent psychiatry.



### **HUMBLE LEADERSHIP**

Syed Faraz helped organize a humanitarian relief flight from Seattle to Poland during the conflict in Ukraine.



### **IMPACT**

Dozens of our scholars joined the effort known as Digital Dunkirk to find, evacuate, and resettle Afghan allies, including Rick Schumacher, Kate Hoit and Adrian Kinsella, Junaid Lughmani, Phil Caruso, and Safi Rauf.

# MEET OUR SCHOLARS

In June 2021, we welcomed our 13th class of Tillman Scholars, 60 remarkable military service members, veterans, and military spouses selected for merit and potential for impact. Here is how a few of them plan to make their mark.



**Danielle O'Neill,  
military spouse:**

*"We must work towards creating a healthcare system that is equitable for all, and as a future nurse practitioner, I will lead the charge for equality and patient's rights."*



**L. Trice Burkes, Army:**

*"A quality education is the vehicle to decolonizing one's mind to transform the status quo. As a higher education administrator, I will help dismantle for-profit institutions that prey on veterans."*



**Rikeem Sholes, Navy:**

*"We should never be done learning. We can always strive to improve ourselves and the situations of others."*



**Lauren Luther,  
Marines:**

*"As a Marine, I prided myself on always finding a way to yes. I will earn the same reputation as a physician: a doctor that veterans can count on."*



**Christopher Cole Sawyers,  
Air Force:**

*"I am building my academic arsenal to fight for fostered youth. Through data-informed policy intervention, I will improve child welfare in Kentucky, which leads the nation in rates of abuse and neglect."*



ARIZONA STATE UNIVERSITY



THE UNIVERSITY OF ARIZONA  
Veterans Education  
& Transition Services



GEORGETOWN UNIVERSITY

UCLA



UNIVERSITY OF  
MARYLAND



UNIVERSITY OF MINNESOTA  
Driven to Discover<sup>SM</sup>



UNIVERSITY OF  
SOUTH FLORIDA



The  
UNIVERSITY  
of  
OKLAHOMA



University of  
Missouri System



THE OHIO STATE UNIVERSITY



Syracuse University



FLORIDA  
AGRICULTURAL AND  
MECHANICAL  
UNIVERSITY



INDIANA UNIVERSITY



COLUMBIA UNIVERSITY  
IN THE CITY OF NEW YORK

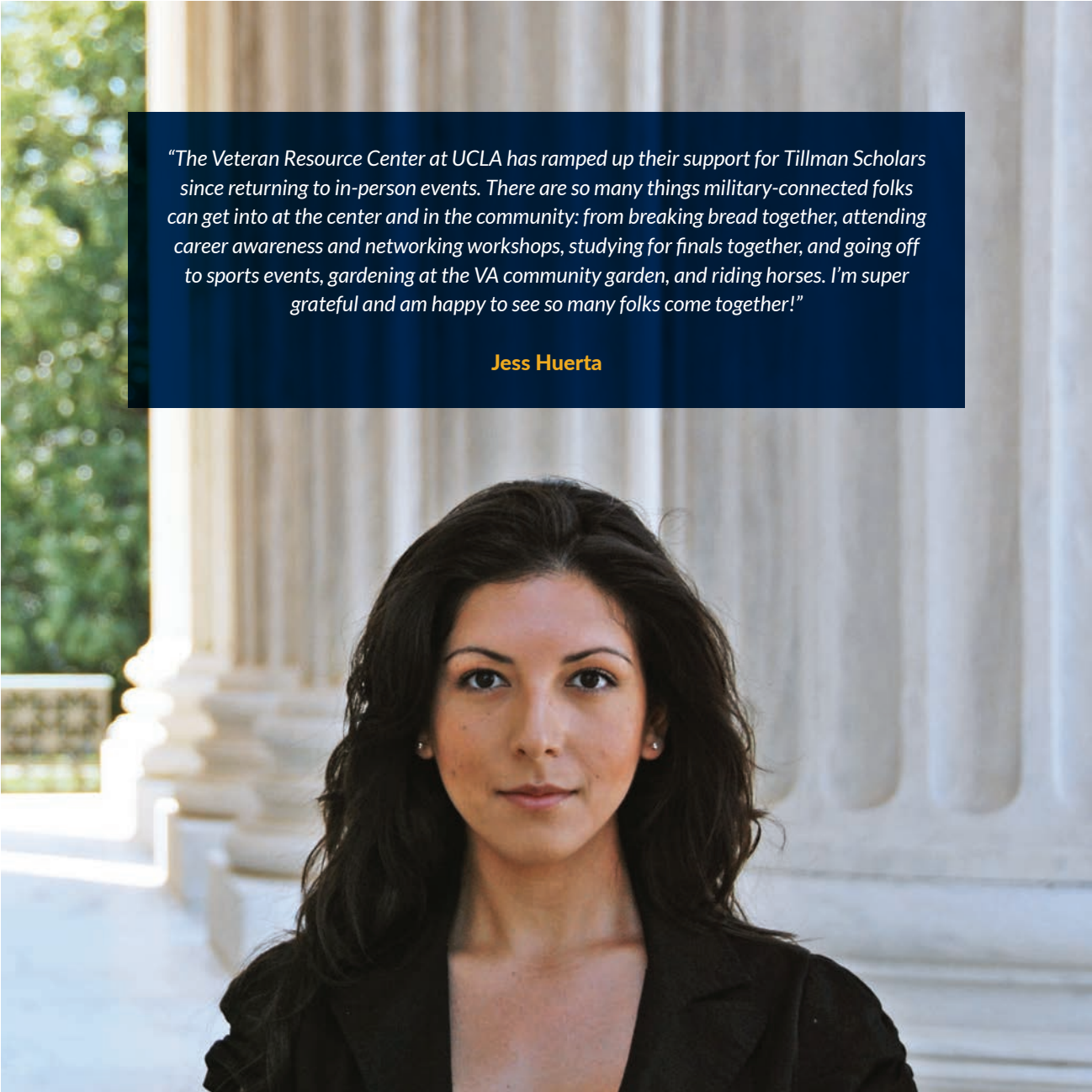
THE GEORGE WASHINGTON UNIVERSITY

WASHINGTON, DC

## OUR UNIVERSITY PARTNERS

These partners demonstrate strong support for their military veterans and spouses and are proud to support Tillman Scholars on their campuses.

University Partners enjoy opportunities for students at their institutions to advance deeper into the selection process than non-UP schools. If you're interested in joining our University Partners program, please contact [scholarships@ptf.org](mailto:scholarships@ptf.org).



*“The Veteran Resource Center at UCLA has ramped up their support for Tillman Scholars since returning to in-person events. There are so many things military-connected folks can get into at the center and in the community: from breaking bread together, attending career awareness and networking workshops, studying for finals together, and going off to sports events, gardening at the VA community garden, and riding horses. I’m super grateful and am happy to see so many folks come together!”*

**Jess Huerta**

# ABOUT OUR SCHOLARS

Tillman Scholars are remarkable service members, veterans, and military spouses whose commitment to leadership through action and service beyond self goes beyond the uniform. Since our founding in 2004, we've selected more than 800 Tillman Scholars as the next generation of leaders, empowering them through academic scholarships, lifelong leadership development, and a global community of high-performing peers and mentors.

**800+** 

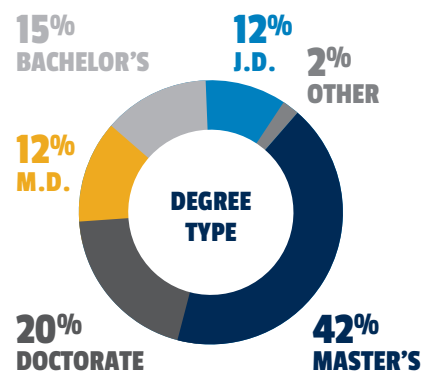
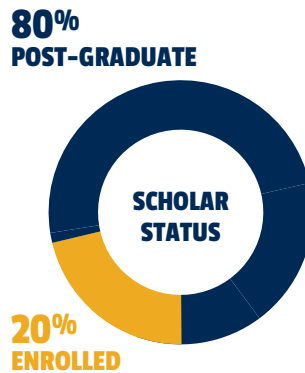
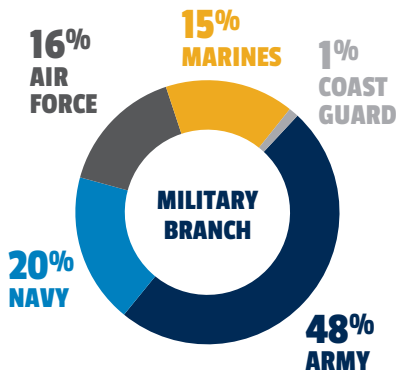
**TILLMAN SCHOLARS  
IN OUR COMMUNITY**

**\$24**  **MILLION**

**INVESTED IN LEADERSHIP AND  
ACADEMIC SUPPORT TO DATE**

**\$22K** 

**AVERAGE LIFETIME  
ACADEMIC AWARD**



## 2021 SCHOLAR CLASS STATUS

51% Veteran  
32% Active Duty  
17% Military Spouse

## 2021 SCHOLAR CLASS GENDER

55% Women  
42% Men  
3% Nonbinary



For more details on our scholars,  
please visit [scholars.ptf.org](https://scholars.ptf.org).



# MAJOR IMPACT AREAS



**31%**  
HEALTH  
CARE



**7%**  
HUMANITIES



**17%**  
PUBLIC  
SERVICE



**6%**  
EDUCATION



**10%**  
STEM



**8%**  
LAW



**17%**  
BUSINESS



# ONE MISSION, ONE COMMUNITY

In 2021, the pandemic forced Pat's Run, presented by TEKsystems, to again go virtual – but that didn't stop our community from showing up across the globe to Give 'Em Hell. With more than 20,000 registrants representing 50 states and 11 countries, we proved that truly we are one community with one mission: uniting and empowering our Tillman Scholars as the next generation of leaders.

Thank you to TEKsystems for their continued support of Pat's Run.

# Thank You!





# CHALLENGE SERIES 2021

## INTRODUCING THE PAT'S RUN CHALLENGE SERIES

In 2021, we launched the three-event Pat's Run Challenge Series, presented by Directors Mortgage. Following Pat's Run in April, thousands took to the streets of their own community in August for our first-ever 10K Challenge, followed by the second 42 in 40 Challenge, with 3,000 participants logging 42 miles in 40 days, ending on Veterans Day 2021. The Challenge Series returns in 2022, with Step Up for Scholars, a more inclusive step challenge launching in August and the return of the 42 in 40 Challenge in October. **Learn more and register at [challengeseries.ptf.org](https://challengeseries.ptf.org).**

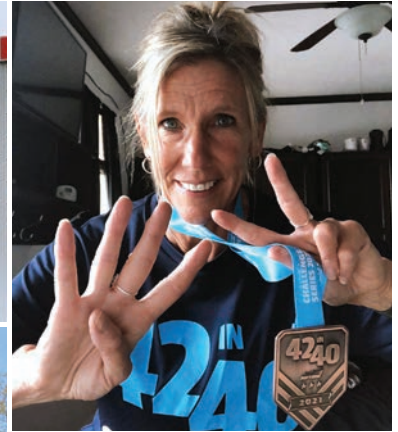
# Thank You!

DIRECTORS<sub>SM</sub>

Mortgage



DISCOVER



# INVESTORS & SUPPORTERS

We place the academic and professional pursuits of our Tillman Scholars at the center of everything we do, and we recognize that our investors – corporations, grantmaking institutions, family foundations and individuals – can and often wish to play a vital and personal role in supporting their journeys. In that spirit, our relationships with our partners are not merely transactional; they are an expression of shared goals and values, spoken with one voice, in support of emerging leadership. The foundation we have built to support scholars and invest in leaders is Pat’s legacy, one we never take for granted. We are incredibly thankful for your support in fulfilling that mission.



TOWERBROOK



**THOMPSON FAMILY FOUNDATION**

**GOLDBERG FAMILY FOUNDATION**

**DEHAEMERS FAMILY CHARITABLE TRUST**

**SMIDT FAMILY FOUNDATION**

**J.S. FRANK FOUNDATION**



### **GUINNESS GIVES BACK**

Guinness selected PTF as its Guinness Gives Back beneficiary in Arizona in 2021, with \$1 from every Guinness Gives Back 8-pack produced in Arizona supporting the foundation.

### **THE JJIV VALOR**

In 2021, Arizona Cardinals defensive end J.J. Watt released the JJIV “Valor” shoe through Reebok, with proceeds benefitting the Pat Tillman Foundation. Designed in conjunction with PTF and Marie Tillman, the Tillman shoe sold out in less than two days.



### **FORD PROUD TO HONOR HALL OF HEROES**

Will Shields, a Pro Football Hall of Fame member, surprised 2020 Tillman Scholar Kevin Bubolz, welcoming him to the Ford Proud to Honor Hall of Heroes, donating \$10,000 to PTF and honoring his work with his therapy dog, Ellie.



## TOGETHER AGAIN AT TILLMAN HONORS

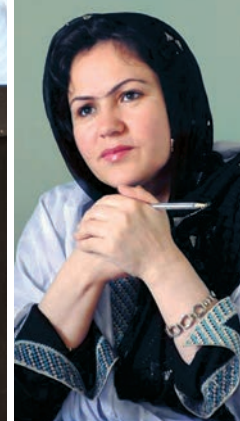
For the first time in more than two years, our community of Tillman Scholars, staff, board members, and investors came together at Chicago's City Hall event space for Tillman Honors, presented by the NFL with major sponsorship from TEKsystems. Our 2021 honorees included Champion Fawzia Koofi, Make Your Mark awardees Kate Hoyt, Junaid Lughmani, and Rick Schumacher accepting on behalf of Digital Dunkirk, and highlighted the impact of three scholars, Dave Prakash, Sadia Heil, and Jayme Hentig, who gave inspiring Make Your Mark Talks.

We're grateful to the NFL, our presenting sponsor, and TEKsystems, as well as our other investors for supporting this event.

Visit [www.tillmanhonors.com](http://www.tillmanhonors.com) to watch last year's livestream and other highlights from the event.



In December 2021, we launched our new membership program, Team 226, with perks for those who make a monthly investment. To date, more than 90 supporters have joined the team. **Find out more at [Team226.org](http://Team226.org).**



# FOUNDATION LEADERSHIP



## EXECUTIVE TEAM



**DAN FUTRELL**  
CEO  
2011 Tillman Scholar



**STEVIE KUENN**  
Director  
Marketing



**SABRINA PERALES**  
Director  
Operations



**MERCEDES ROHLFS**  
Director  
Development



**BRETT SANPIETRO**  
Director  
Programs

## BOARD OF DIRECTORS



**MARIE TILLMAN**  
Chair & Co-Founder



**IAN SACKS**  
Lead Director  
TowerBrook Capital



**CHRIS HART**  
Vice Chair  
Civic Technologies



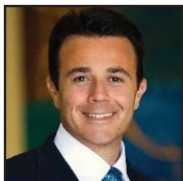
**JOE BROWNE**  
Director  
Joe Browne Agency



**MEG CORTEZI**  
Director  
TEKsystems



**ALEX GARWOOD**  
Director  
MongoDB



**BENJAMIN HILL**  
Director  
Wealth Enhancement  
& Preservation, Inc



**LAZAR RAYNAL**  
Director  
Quinn Emanuel  
Urquhart & Sullivan,  
LLP



**JOE SHENTON**  
Director  
Summit Trail Advisors



**JOHN SVOBODA**  
Director  
Svoboda Capital  
Partners



**CHRISTINE WILKINSON**  
Director  
Arizona State  
University



**MIKE BIDWILL**  
Director  
Emeritus

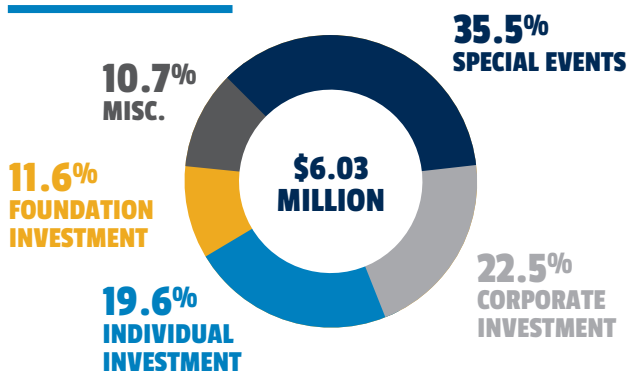


# FINANCIALS

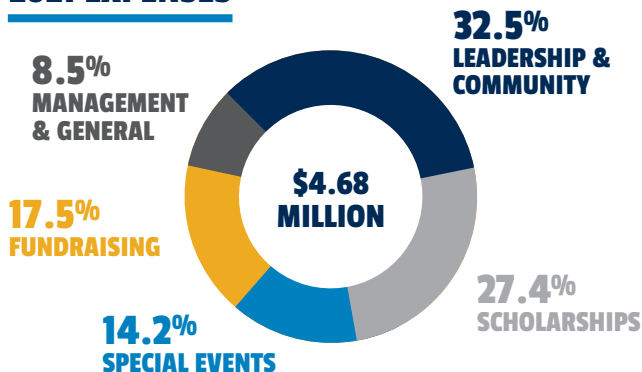
Transparency to our investors and our community is a top priority. This page reflects our audited financials for the year ending December 31, 2021.

The Pat Tillman Foundation's audited financial statements, state disclosures and 990s can be found online at [impact.ptf.org](http://impact.ptf.org).

## 2021 REVENUE



## 2021 EXPENSES



## REVENUE

Special Events	\$2,142,268
Corporate Investment	\$1,357,070
Individual Investment	\$1,182,907
Foundation Investment	\$702,138
Miscellaneous	\$646,563
<b>TOTAL REVENUE</b>	<b>\$6,030,946</b>

## EXPENSES

Leadership and Community	\$1,522,155
Scholarships	\$1,281,500
Special Events	\$664,814
Fundraising	\$818,366
Management and General	\$396,349
<b>TOTAL EXPENSES</b>	<b>\$4,683,184</b>

## FINANCIAL RATIOS

	2018	2019	2020	2021
Programs	80%	78%	70%	70%
Fundraising	14%	14%	19%	20%
Management and General	6%	8%	11%	10%



For its commitment to accountability, transparency and healthy financial practices, the Pat Tillman Foundation has earned the highest possible rating from Charity Navigator, as well as a Gold Seal of Transparency from Guidestar.

# CARRYING ON THE LEGACY OF A LEADER

---

## Pat Tillman

Pat was born in 1976 in San Jose, California. He led his high school team to a championship after he was told he was too small to ever play football. What Pat lacked in size, he more than made up for in intensity—he led ASU to the 1997 Rose Bowl after an undefeated season. Between games, Pat earned a B.S. in Marketing, graduating Summa Cum Laude.

The Arizona Cardinals selected Pat in the 7th round of the 1998 NFL Draft. Despite skepticism about his ability, he became the team's starting safety and broke the franchise record for tackles in 2000 with 224. However, Pat's NFL success did not go to his head. He drove to games in the same beat-up truck he had in college. In the off-season, he challenged himself with marathons and triathlons while pursuing a master's degree in history from ASU. He volunteered with Boys and Girls Clubs, the March of Dimes, and local schools.

In the spring of 2002, Pat married his high school love, Marie. He then decided to place his NFL career on hold, turning down a \$3.6 million contract to enlist in the U.S. Army. Pat and his brother Kevin joined the U.S. Army that July, committing to a three-year term. They were assigned to the second battalion of the 75th Ranger Regiment, and served tours in Iraq in 2003 and in Afghanistan in 2004. On April 22, 2004, Pat's unit was ambushed. His heroic efforts to provide cover for fellow soldiers led to his tragic death via fratricide.

While the story of Pat's death may have been more publicized, it is Pat's life, principles and service that are his true legacy—and this foundation's inspiration.





## PAT TILLMAN'S JERSEY COMES HOME

Dan Futrell, CEO and 2011 Tillman Scholar, and Alex Garwood, co-founder and board member, received the Tillman jersey that hung at the Pat Tillman Memorial USO Center at Bagram Airfield in Afghanistan. The USO presented the jersey to PTF during halftime of the Arizona Cardinals game on Nov. 14, 2021, at the State Farm Stadium in Glendale.



Scholars at 2021 Tillman Honors

 **PAT TILLMAN  
FOUNDATION**

[www.ptf.org](http://www.ptf.org)

