



POWERED BY





# WELCOME TO THE 2019 LEADERSHIP SUMMIT

As Tillman Scholars, you represent everything that the Pat Tillman Foundation is proud to stand for. And as you'll soon discover, you're now part of an amazing group of talented, ambitious and generous peers.

In his life, Pat made his mark as a husband, teammate, soldier and brother. He believed we should always strive to be a part of something bigger than ourselves. The qualities that we look for in Tillman Scholars are the same qualities that Pat displayed throughout his life: service, scholarship, humble leadership and impact.

With the generous support of the NFL and our sponsors, this Summit celebrates Pat's values and convenes Tillman Scholars from diverse impact areas to network, collaborate and develop solutions to the challenges facing our country and communities. Over the next three days, we hope you'll enjoy this chance to connect with fellow Tillman Scholars, as well as business, nonprofit, and community leaders, to identify more ways you can make your mark.

Your invitation into the Tillman Scholar community is a statement about our belief in your ability to positively impact the most pressing issues we face, and our commitment to empowering you as leaders to make a difference at home and around the world for years to come.

In service,



**MARIE TILLMAN**

Board Chair & Co-Founder  
Pat Tillman Foundation



**DAN FUTRELL**

Chief Executive Officer  
Pat Tillman Foundation



# THURSDAY, JULY 18

Attire: Casual / Business Casual

- 9:00am-3:00pm** University Partner Breakout Session  
Roosevelt (WB 1315)  
\*University Partner POCs Only
- 10:00am-3:00pm** Tillman Scholar Check-in  
Roosevelt (14th Floor Rec Room)
- 10:30-4:00pm** Tillman Scholar Portrait Session  
Roosevelt (WB 317)  
\*Check the schedule in your folder\*
- 2:30pm** 2019 Tillman Scholar Orientation  
Roosevelt (WB 612)  
Part 1: Welcome and Introductions  
Part 2: PTF Overview  
Part 3: Network Benefits & Expectations
- 4:45pm** The Legacy of Pat Tillman:  
In conversation with Marie Tillman & Jon Krakauer  
Roosevelt (WB 612)
- 6:00-8:00pm** Welcome Reception,  
Roosevelt Library (10th Floor AUD)

## CHECK-IN

Tillman Scholars should check into both their RU rooms and the Summit. 2019 Tillman Scholars should complete check-in by 2:30 p.m. Current and alumni Scholars can check-in until 5 p.m. Early arrivals should check into their rooms upon arrival and check into the Summit between 10 a.m.-3 p.m. Do not lose your dorm key! Keep it in a safe place to avoid a \$250 fine.

**SCHOLAR PORTRAITS** Studio – Roosevelt WB 317  
You will have your official Tillman Scholar portrait taken on Thursday based on the schedule distributed at dorm check-in. A few suggestions below on what to wear.

- Business casual attire
- Avoid loud colors and patterns (Hawaiian shirts, neon, etc.)
- No strapless dresses

# WELCOME RECEPTION



SERVICE TO SCHOOL (S2S) provides free application counseling to military veterans, helping them to win admission to the best universities possible and maximize their education benefits.



TEAM RED, WHITE & BLUE enriches the lives of America's veterans by connecting them to their community through physical & social activity.



TEAM RUBICON unites the skills and experiences of military veterans with first responders to rapidly deploy emergency response teams.



TRAVIS MANION FOUNDATION empowers veterans and families of fallen heroes to develop character in future generations.



STUDENT VETERANS OF AMERICA provides military veterans with the resources, support and advocacy needed to succeed in higher education and following graduation.



THE MISSION CONTINUES empowers veterans who are adjusting to life at home to find purpose through community impact.



BUNKER LABS is a national not-for-profit organization built by military veteran entrepreneurs to empower other military veterans as leaders in innovation.



ROAD HOME PROGRAM provides confidential mental health services for veterans and their families, regardless of ability to pay.



# FRIDAY, JULY 19

Attire: Casual / Business Casual

<b>6:15am</b>	Optional Lakefront Run Roosevelt Lobby (Wabash Avenue)
<b>7:00-8:15am</b>	Breakfast Available Roosevelt Cafeteria (2nd Floor)
<b>8:20am</b>	Depart Roosevelt for Venue SIX10 Roosevelt Lobby (Wabash Avenue)
<b>8:45am</b>	Plenary Sessions 610 S. Michigan, VenueSIX10  A Decade of Impact: Voices from the 2009 Tillman Scholar Class  Humble Leadership in a Community of High Achievers  Critical Connections: Expanding Community-Based Health Initiatives
<b>12:45pm</b>	Lunch Roosevelt (Fainman /Congress Hall)
<b>1:45-2:45pm</b>	Impact Area Networking Sessions Roosevelt University (Various Rooms)  Humanities Session   AUD 614 Legal Session   AUD 628 STEM Grant Writing Session   AUD 644 Public Service Session   AUD 811 Healthcare Session   WB 612 Business Session   WB 611 Social Work Session   Fainman Lounge Education Session   WB 14th Floor Lounge
<b>3:00pm</b>	Unconference Roosevelt (Ganz Hall)
<b>5:15pm</b>	Dinner Roosevelt (Fainman/Congress Hall)
<b>6:30pm</b>	Depart Roosevelt University Buses will promptly leave for Boat Cruise Roosevelt Lobby (Wabash Avenue)
<b>7:00-10:30pm</b>	Lake Michigan Boat Cruise

# SATURDAY, JULY 20

Attire: Navy Tillman Scholar t-shirt

<b>6:15am</b>	Optional Lakefront Run Roosevelt Lobby (Wabash Avenue)
<b>7:00-8:15am</b>	Breakfast Available Roosevelt Cafeteria (2nd Floor)
<b>8:20am</b>	Depart Roosevelt for Venue SIX10 Roosevelt Lobby (Wabash Avenue)
<b>8:45am</b>	Plenary Sessions 610 S. Michigan, VenueSIX10  Unlocked: Achieving Criminal Justice Reform  On the Horizon: Space Policy, Exploration and Business
<b>11:45am-12:45pm</b>	Engagement Sessions Roosevelt University (Various Rooms)  Engagement Session 1   AUD 628 Engagement Session 2   AUD 644 Engagement Session 3   AUD 811 Selection Committee Training Session   WB 612 Media Session   WB 611
<b>12:45pm</b>	Lunch Roosevelt (Fainman /Congress Hall)
<b>2:00-4:00pm</b>	Tillman Pitch Roosevelt (Ganz Hall)
<b>3:00pm</b>	Keynote   Range: Why Generalists Triumph in a Specialized World Roosevelt (Ganz Hall)
<b>6:00pm</b>	Regional Dinners Roosevelt (Fainman /Congress Hall)
<b>8:00pm</b>	Karaoke Night / Free Night Brando's Speakeasy (Cash Bar)

# SUNDAY, JULY 21

<b>8:00am - 12:00pm</b>	Check out and Departures Roosevelt University (14th Floor)
-------------------------	---

## DORM CHECKOUT

- All Summit attendees must be fully checked out of their room by 12:00pm (unless you have made prior arrangements)
- Please return your access card & dorm key on the 14th Floor
- Please bring down your sheets and pillows
- Luggage may be stored in the 14th Floor Rec Room if you are not catching your flights right away
- Stop and sign a thank you card for supporters before you depart
- Grab a granola bar at checkout





# SCHOLAR NETWORK AND IMPACT

Tillman Scholars represent a talented and diverse community of emerging leaders in healthcare, business, law, STEM, public service, education and humanities. Throughout the Summit, we encourage discussion, networking and collaboration across fields. Introduce yourself, share your interests and exchange your contact info to continue the conversation on how you're making your mark beyond the Summit!



**SHARE YOUR  
SUMMIT EXPERIENCE**



Pat Tillman  
Foundation  
(Official)



@PatTillmanFnd  
#PTLS2019  
#MAKEYOURMARK



@PatTillmanFnd  
#PTLS2019  
#MAKEYOURMARK



**TILLMAN**  
SCHOLAR

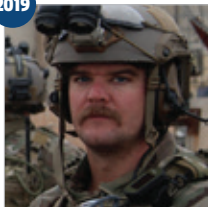
# ATTENDEES

2019



**STEVE ALLEN**

2019



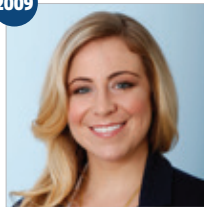
**ETHAN ALLISON**

2009



**ROBERT ANDERS**

2009



**LYNDSEY ANDERSON**

2018



**CHRISTINE  
ARGUEZA-PRINCE**

2018



**THOMAS BAKER**

2019



**SAUL BAUTISTA**

2017



**EIMAN BEHZADI**

2019



**BLAZE BELOBRAJDIC**

2018



**LANCE BELOBRAJDIC**

2016



**BRIAN BERTGES**

2019



**TIMOTHY BISHOP**

2015



**AMY BOWEN**

2019



**KIRK BUTLER**

2019



**EDWARD BYERS**

2019



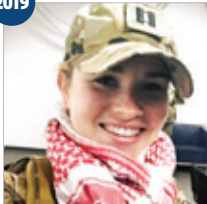
**STUART CAUDILL**

2019



**ERIC CHASTAIN**

2019



**GRETE COLE**

2019



**DAVID COOMES**

2019



**SHERRY COX**

2019



**STEPHEN DONOVAN**

2019



**NICOLE DUSANG**

2013



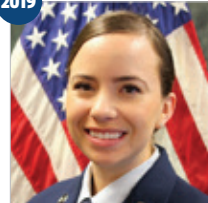
**MARK EBELING**

2019



**WILLIAM EISENHART**

2019



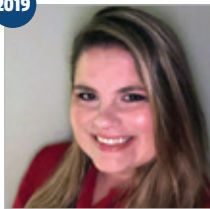
**LISA ELIJAH**



**TILLMAN**  
SCHOLAR



2019



**STEPHANIE ERWIN**

2018



**JENNIFER ESPARZA**

2013



**MATTHEW GARRETSON**

2018



**ANDREW GARZA**

2019



**BRIDGET GEHRZ**

2019



**CHELSEA GERLICKI**

2019



**ANDREW GILROY**

2016



**ANDREA GOLDSTEIN**

2014



**CARLOS GONZALEZ**

2019



**JUSTIN GOR**

2017



**RYAN GROSS**

2018



**ERIC HAGEN**

2016



**ROBERT HAM**

2014



**LACHIANA HAMILTON**

2016



**ANTHONY HATALA**

2017



**TARA HEIDGER**

2014



**CAESAR HERNANDEZ**

2017



**MARQUERITE HERZOG**

2019



**GREGORY HOWE**

2010



**BARRETT HOWELL**

2019



**AKHIL IYER**

2019



**DONOVAN JENKINS**

2019



**NATHAN JESTER**

2019



**CHRISTOPHER JONES**

2017



**EMILY JUNKINS**

2014



**ADRIENNE KAMBOURIS**

2013



**MICHAEL KOTHAKOTA**

2013



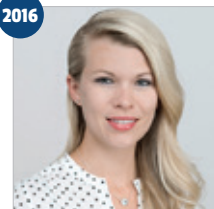
**APRIL KROWEL**

2019



**CARL KRUEGER**

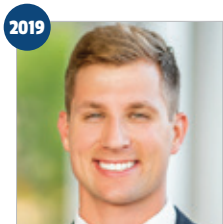
2016



**ASHLEY LA RUE**



**TILLMAN**  
SCHOLAR



**DAVID LASZCZ**



**ANGELA LAYFIELD**



**ANTHONY LENA**



**LOGAN LESLIE**



**CHARLES LONG**



**LINDSAY LORSON**



**DENNIS MAGNASCO**



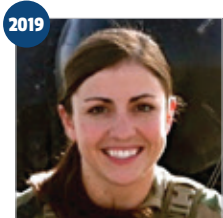
**MEGAN MALONE**



**KA'IMI'INA MASUNAGA**



**ADAM MATHES**



**CARRIE MAYER**



**KELLY ANNE MCCARTY**



**STEVEN MCCULLOCH**



**MELISSA MCCULLOUGH**



**CHRISTINA MCKINNON**



**ZACHARY MEADE**



**JEFF MERAY**



**THOMAS MEYERSON**



**KERI MILLS**



**CARL MIN**



**JOSEPH MOLINA**



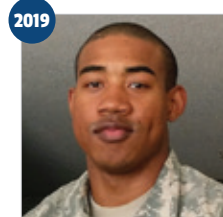
**CHRISTINE MOTT**



**JEFF MUELLER**



**JACKIE MUNN**



**JABULANI MZEE**



**KATELYN NEWTON**



**JUSTIN NICHOLS**



**SANGKI OAK**



**NICHOLAS O'NEIL**



**LISA OHNSTAD**





**SARA OLSEN**



**JEFFREY OURY**



**ZEESHAN PARVEZ**



**TRILLITYE PAULLIN**



**KRISTI PELZEL**



**HAROLD PENSON**



**JOSHUA PERICLES**



**CHRISTOPHER  
PETERSEN**



**KATHRYN PISTON**



**RILEY POST**



**JASON POUDRIER**



**TREVOR PROPHET**



**KATHERINE QUARTARO**



**ERIC RECKER**



**JOHN REIDELBACH**



**ZACHARY RHYNER**



**LISA RICH**



**MARISOL RIDDELL**



**PATRICK ROBINSON**



**ETHAN ROCKE**



**CHRIS ROESSNER**



**SARAH ROWE**



**NATASHA RYAN**



**BLAKE SCHROEDTER**



**KIM SHAUGHNESSY-  
GRANGER**



**MICHAEL SHEPPARD**



**MATTHEW SHERLAW**



**LYDIA SHORT**



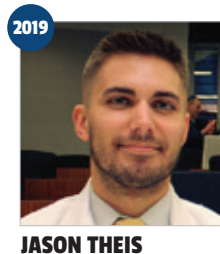
**JUSTIN SOLARCZYK**



**WESLEY STINER**

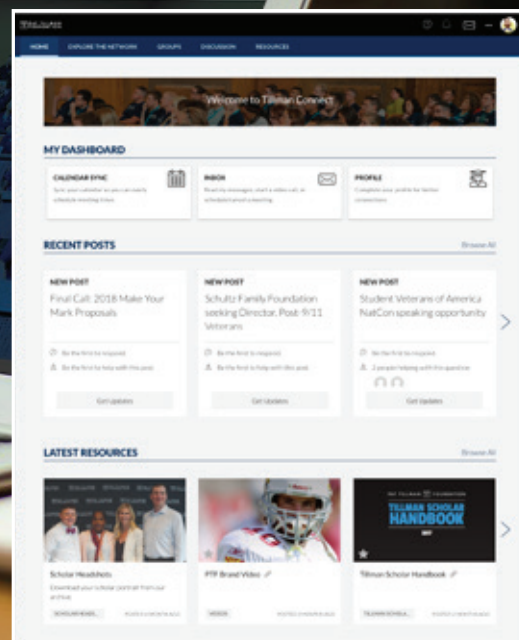


**TILLMAN**  
SCHOLAR



# TILLMAN CONNECT

Get to know Tillman Connect, the online networking resource for the Tillman Scholar community. Explore the network and connect with other Tillman Scholars working in your field or profession. Tillman Connect also features discussion boards on a variety of topics, job postings and additional PTF-related resources.





# BOARD OF DIRECTORS



**MARIE TILLMAN**  
Chair & Co-Founder



**CHRIS HART**  
Vice Chair  
Civic Technologies



**IAN SACKS**  
Lead Director  
TowerBrook Capital



**ALEX GARWOOD**  
Director  
Mongo DB



**SAGE STEELE**  
Director  
ESPN



**BENJAMIN HILL**  
Director  
Hill Financial Advisors



**JOE BROWNE**  
Director  
Joe Browne Agency



**MIKE BIDWILL**  
Director  
AZ Cardinals



**LAZAR RAYNAL**  
Director  
Quinn Emanuel  
Urquhart & Sullivan, LLP



**JOE SHENTON**  
Director  
Summit Trail Advisors



**CHRISTINE WILKINSON**  
Director  
Arizona State University

# STAFF MEMBERS

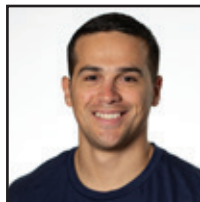
2011



**DAN FUTRELL**  
Chief Executive  
Officer



**SABRINA PERALES**  
Director of Operations



**ZEKE WARZEKA**  
Pat's Run Event Manager



**JONATHAN DUE**  
Director of Programs  
and Scholarships



**CARA HAMMER**  
Program Manager

2013



**TINA BRUENNING**  
Scholarships  
Manager



**TABATHA RENZ**  
Program Manager



**CHRISTOPHER  
CORDES**  
Development  
Manager



**ETHAN  
ARMSTRONG**  
Development  
Manager



**MICHELLE  
MCCARTHY**  
Director of Brand  
& Communications



**SHANNON  
SPESHOCK**  
Communications  
Manager



**TAYLOR COLLIAU**  
Marketing  
Coordinator



**JOHN O'CONNOR**  
Art Director



**PARKER STORRY**  
Volunteer

# THANKS TO OUR SPONSORS & PARTNERS



## UNIVERSITY PARTNERS





# ROOSEVELT MAPS

## REMINDERS

**Need Building Card for Access:** Floors 1 & 14

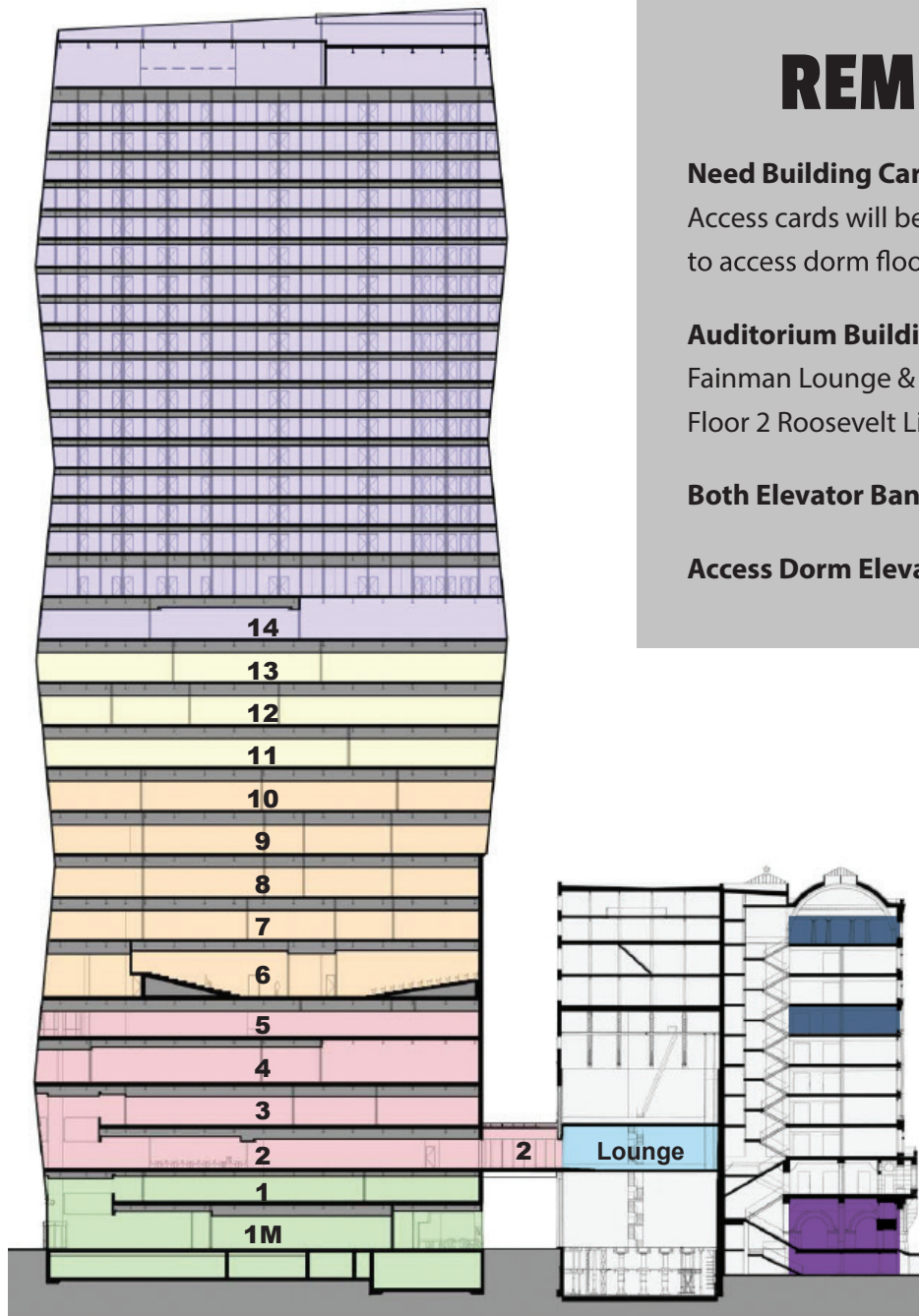
Access cards will be needed in elevators to access dorm floors

**Auditorium Building Access:**

Fainman Lounge & Congress Lounge,  
Floor 2 Roosevelt Library, Floor 10

**Both Elevator Banks Available:** Floors 2 & 6

**Access Dorm Elevators:** Floor 14



WABASH BUILDING

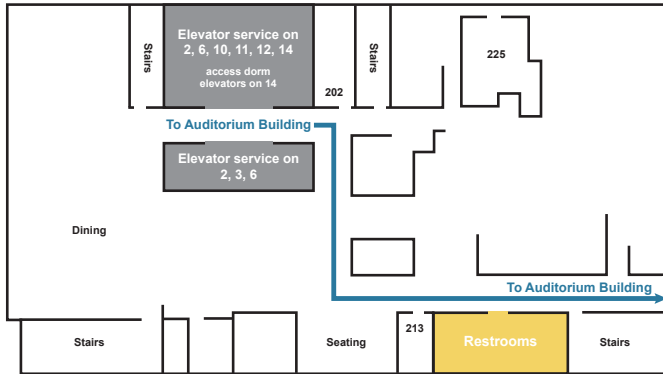
AUDITORIUM BUILDING

- Student Housing
- Administration
- Classrooms
- Student Union
- Roosevelt University Lobby:  
Wabash Avenue Side
- Auditorium Building:  
Roosevelt Library, Floor 10  
Ganz Hall, Floor 7
- Auditorium Building:  
Fainman Lounge &  
Congress Lounge
- Roosevelt University Lobby:  
Michigan Avenue Side

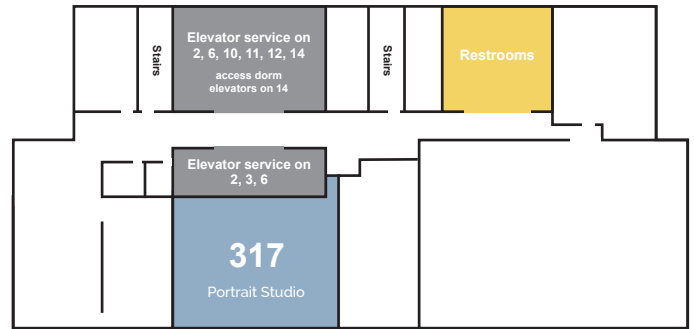
*\*Note: In order to access Roosevelt Library (Floor 10) or Ganz Hall (Floor 7) in the Auditorium Building, proceed to Fainman/Congress Hall and go up the elevators.*

# WABASH FLOOR MAPS

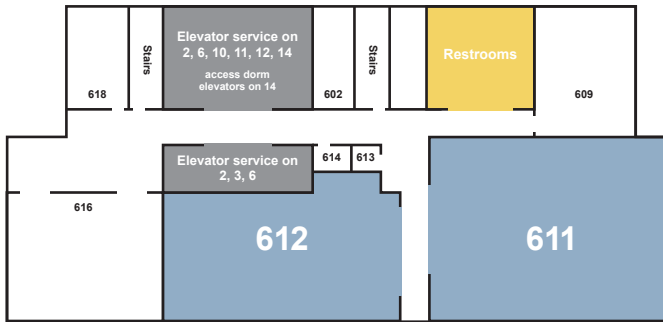
## FLOOR 2



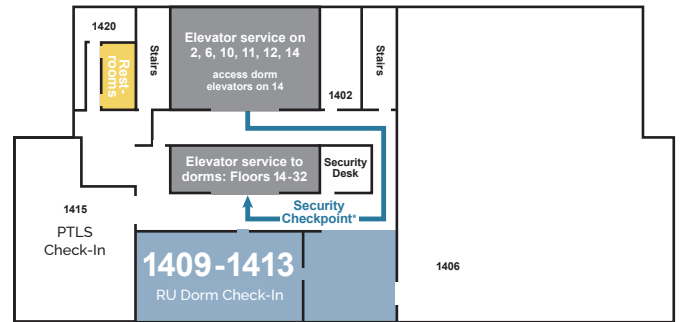
## FLOOR 3



## FLOOR 6



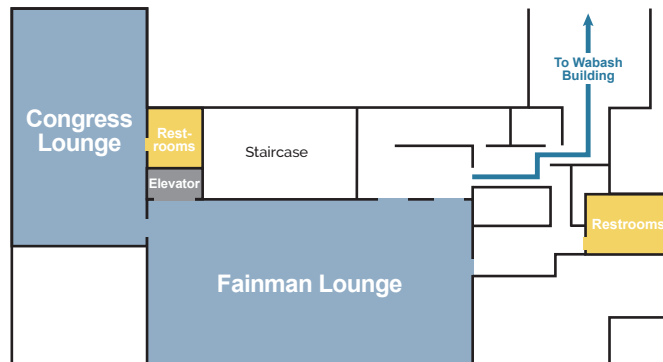
## FLOOR 14



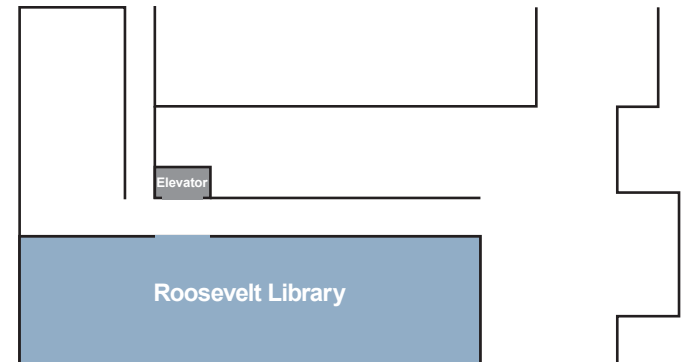
\*Must have building card.

# AUDITORIUM FLOOR MAPS

## FLOOR 2



## FLOOR 10





## WHO WE ARE

Family and friends established the Pat Tillman Foundation (PTF) following Pat's death in April 2004 while serving with the 75th Ranger Regiment in Afghanistan. PTF unites and empowers remarkable military veterans and spouses as the next generation of public and private sector leaders committed to service beyond self. Through the Tillman Scholars Program, PTF is building the preeminent fellowship for active duty U.S. service members, veterans and military spouses. The fellowship program supports Tillman Scholars with academic scholarships, professional development opportunities and a national network, so they are empowered to make an impact in the world. Tillman Scholars are already making a difference in healthcare, business, law, public service, STEM, education and the humanities.



## CORE VALUES



### SERVICE

Dedicated to service beyond self in and out of uniform.



### HUMBLE LEADERSHIP

Selflessly committed to leading by example.



### SCHOLARSHIP

A lifelong learner, passionate about intellectual growth.



### IMPACT

Determined to unite others and advance ideas that change the world.



Since its inception, the Tillman Scholars Program has evolved into a world-class community of more than 630 service members, veterans and military spouses, who are driven by their military service and life experiences to make an impact. The tenets of the Tillman Scholar Program are:

## SCHOLARSHIPS

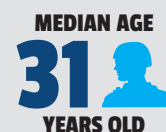
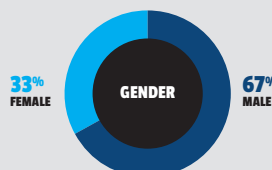
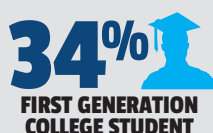
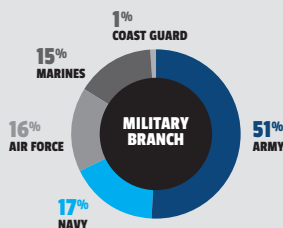
Annual funding for academic expenses, including tuition, books, and living expenses.

## PROFESSIONAL DEVELOPMENT

Opportunities to advance knowledge, skills, and experience.

## NETWORK

Access to a community of high-performing peers, mentors and industry leaders.





# PAT TILLMAN FOUNDATION

Learn more at [PatTillmanFoundation.org](https://PatTillmanFoundation.org)



Pat Tillman Foundation (Official)



@pattillmanfnd



@pattillmanfnd